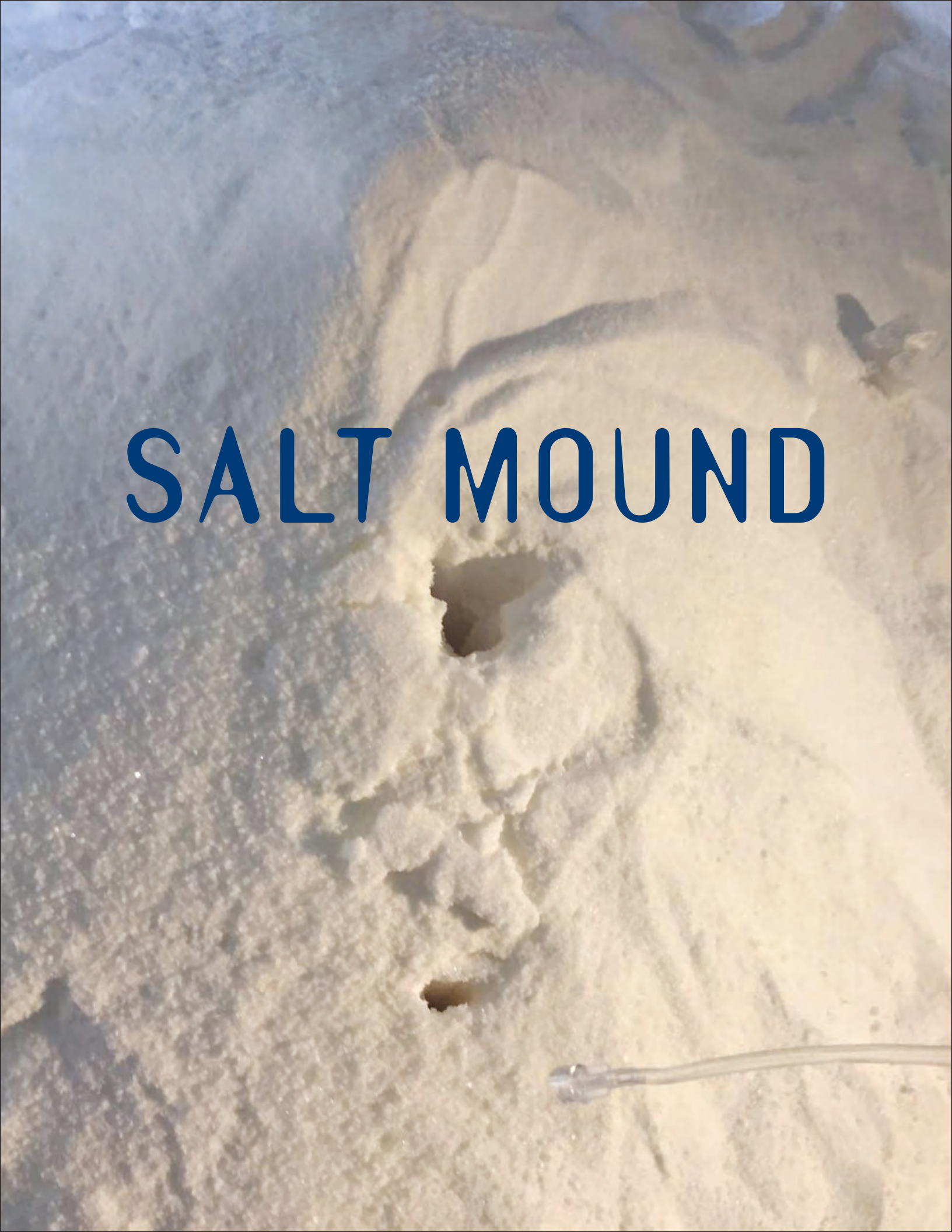


SALT MOUND





January 28 – May 27, 2018

SALT MOUND

Jerusalem between Heaven and Earth

Derfner Judaica Museum

Riverdale, New York

Director: Susan Chevlowe Phd.



← **Jerusalem Biennale 2017**

Jerusalem: Questions Between Heaven and Earth

The Underground Museum

Curator: Ori Z. Soltes

Organized by the Jewish Art Salon.

Yona Verwer, Founder/Director

SALT MOUND

A symbolic installation artwork addressing the deterioration of the **Dead Sea** and its slow demise. Images of the deterioration process, ecological, political, extractions of minerals and religious issues are displayed. A Salt Mound in a box, a water element will drip down onto the mound of salt symbolizing the slow drip of the Jordan River into the Dead Sea, which will create craters in the mound and a video projection of my trip to Jericho.

This publication accompanies the exhibition *Jerusalem between Heaven and Earth*, the Salt Mound installation by Bruria Finkel and presented at the Derfner Judaica Museum, Riverdale, New York. January 28 – May 27, 2018

Copyright © 2018 Bruria Finkel
All rights reserved. No part of this publication may be reproduced in any form by any mechanical or electronic means (including photocopying, recording, or any information storage and retrieval system) without the prior written permission of the publisher.

ISBN 978-1-5323-6562-1

Designed by Roseline Seng, Rose Line Design
Printed by Marina Graphic Center, Hawthorne, CA

Created by Bruria Finkel
bruriafinkel.com

Lowest point on earth

The surface of the Dead Sea is over 1,300 feet below sea level. The very bottom of the sea, in the deepest part, is over 2,300 feet below sea level. The Dead Sea has some of the most saline water on earth; as much as 35% of the water is dissolved salts! That’s almost six times as salty as the ocean! The Dead Sea is completely landlocked and it gets saltier with increasing depth. Near the bottom of the Dead Sea, salt concentrations are so saturated that salt crystals precipitate out of the water and settle to the sea floor. The surface, fed by the River Jordan, is less saline down to about 130 feet (40 meters).



Photo: Dieter Manske

Climate data for Dead Sea, Sedom (390 m below sea level)													
Month	Jan	Feb	Mar	Apr	May	Jun	Jul	Aug	Sep	Oct	Nov	Dec	Year
Record high °C (°F)	26.4 (79.5)	30.4 (86.7)	33.8 (92.8)	42.5 (108.5)	45.0 (113)	46.4 (115.5)	47.0 (116.6)	44.5 (112.1)	43.6 (110.5)	40.0 (104)	35.0 (95)	28.5 (83.3)	47.0 (116.6)
Average high °C (°F)	20.5 (68.9)	21.7 (71.1)	24.8 (76.6)	29.9 (85.8)	34.1 (93.4)	37.6 (99.7)	39.7 (103.5)	39.0 (102.2)	36.5 (97.7)	32.4 (90.3)	26.9 (80.4)	21.7 (71.1)	30.4 (86.7)
Daily mean °C (°F)	16.6 (61.9)	17.7 (63.9)	20.8 (69.4)	25.4 (77.7)	29.4 (84.9)	32.6 (90.7)	34.7 (94.5)	34.5 (94.1)	32.4 (90.3)	28.6 (83.5)	23.1 (73.6)	17.9 (64.2)	26.1 (79)
Average low °C (°F)	12.7 (54.9)	13.7 (56.7)	16.7 (62.1)	20.9 (69.6)	24.7 (76.5)	27.6 (81.7)	29.6 (85.3)	29.9 (85.8)	28.3 (82.9)	24.7 (76.5)	19.3 (66.7)	14.1 (57.4)	21.9 (71.4)
Record low °C (°F)	5.4 (41.7)	6.0 (42.8)	8.0 (46.4)	11.5 (52.7)	19.0 (66.2)	23.0 (73.4)	26.0 (78.8)	26.8 (80.2)	24.2 (75.6)	17.0 (62.6)	9.8 (49.6)	6.0 (42.8)	5.4 (41.7)
Average precipitation mm (inches)	7.8 (0.307)	9.0 (0.354)	7.6 (0.299)	4.3 (0.169)	0.2 (0.008)	0.0 (0)	0.0 (0)	0.0 (0)	0.0 (0)	1.2 (0.047)	3.5 (0.138)	8.3 (0.327)	41.9 (1.65)
Average precipitation days	3.3	3.5	2.5	1.3	0.2	0.0	0.0	0.0	0.0	0.4	1.6	2.8	15.6
Average relative humidity (%)	41	38	33	27	24	23	24	27	31	33	36	41	31.5
Source: Israel Meteorological Service ^[24]													



Politics

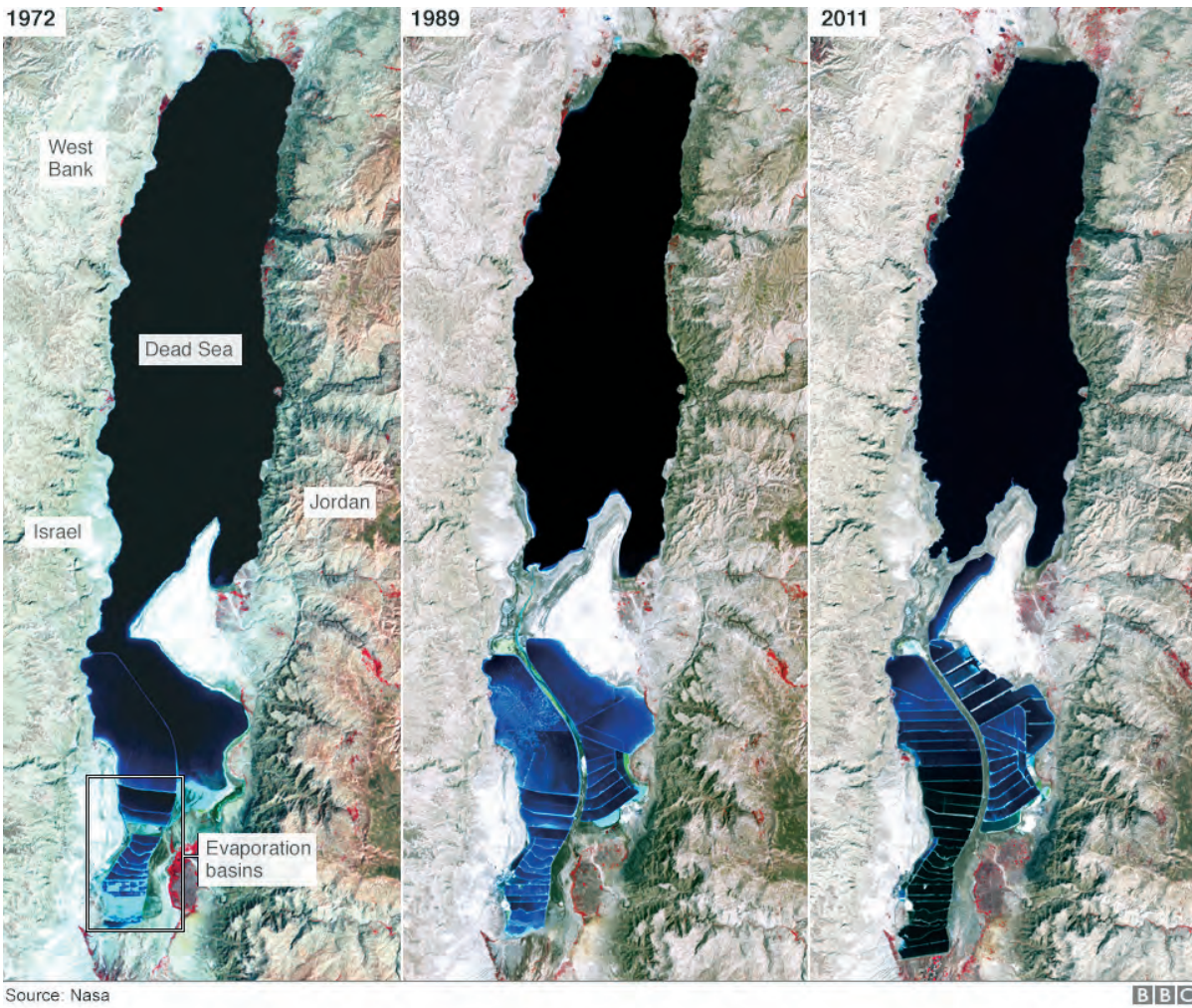
Those responsible for the demise of the Dead Sea are 4 countries: Syria, Lebanon, Jordan and Israel.

The diversion of the Jordan River waters by Israel, Jordan, Syria and Lebanon has significantly diminished the Jordan's flow into the Dead Sea and has been a major factor in the considerable drop in the sea's water level since the 1960s.

Scientists estimate that the Dead Sea lowers by as much as 13 inches per year. On a geologic time scale, that's incredibly fast!



“
The Arab-Israeli war that took place in June of 1967 was undeniably a major watershed in modern Middle Eastern history and a fundamental inflection point in the Arab-Israeli conflict.”
– Aaron David Miller, *The Atlantic*



Facts
The tributaries to the Jordan River start at the slopes of Mount Hermon. In Syria, the Baniyas River, a **Dam** was created. In Lebanon, the Habasbani River, a **Dam** was created. Between them flows the Dan River.

Industry

Extracted from the Salted Dead Sea

Industry: Chemicals & Extraction of Minerals
Founded: 1929
Products: Potash, Bromine, Magnesium
Owner: Israel Chemicals

- Table salt
- Calcium magnesium acetate
- Potassium acetate
- Potassium formate
- Sodium formate
- Calcium formate
- Urea a common fertilizer Agricultural By-Products (Generally used as additives to sodium chloride)
- De-icer Salt used on icy roads and airplanes



Photo: Mark A. Wilson

Scientists predict that the Dead Sea will be gone in 50 years.



Photo: Mark A. Wilson

Sinkholes occur when the Dead Sea dries out and sweet water enters the earth and melts the salt.

“While at the Jerusalem Biannual I learned that Yam Hamelach (the Dead Sea) losses a meter (3 Feet) of depth every year, the numbers of sinkholes are 5000 and growing. The economy of the area is affected and the ecology is in the process of deterioration.”
– Bruria Finkel

Tourism

Development on both sides of the Dead Sea has been overwhelming and prosperous.

Mount Sodom



Photo: Mark A. Wilson

Kempinski Hotel Ishtar Dead Sea



Photo: High Contrast

Ein Bokek



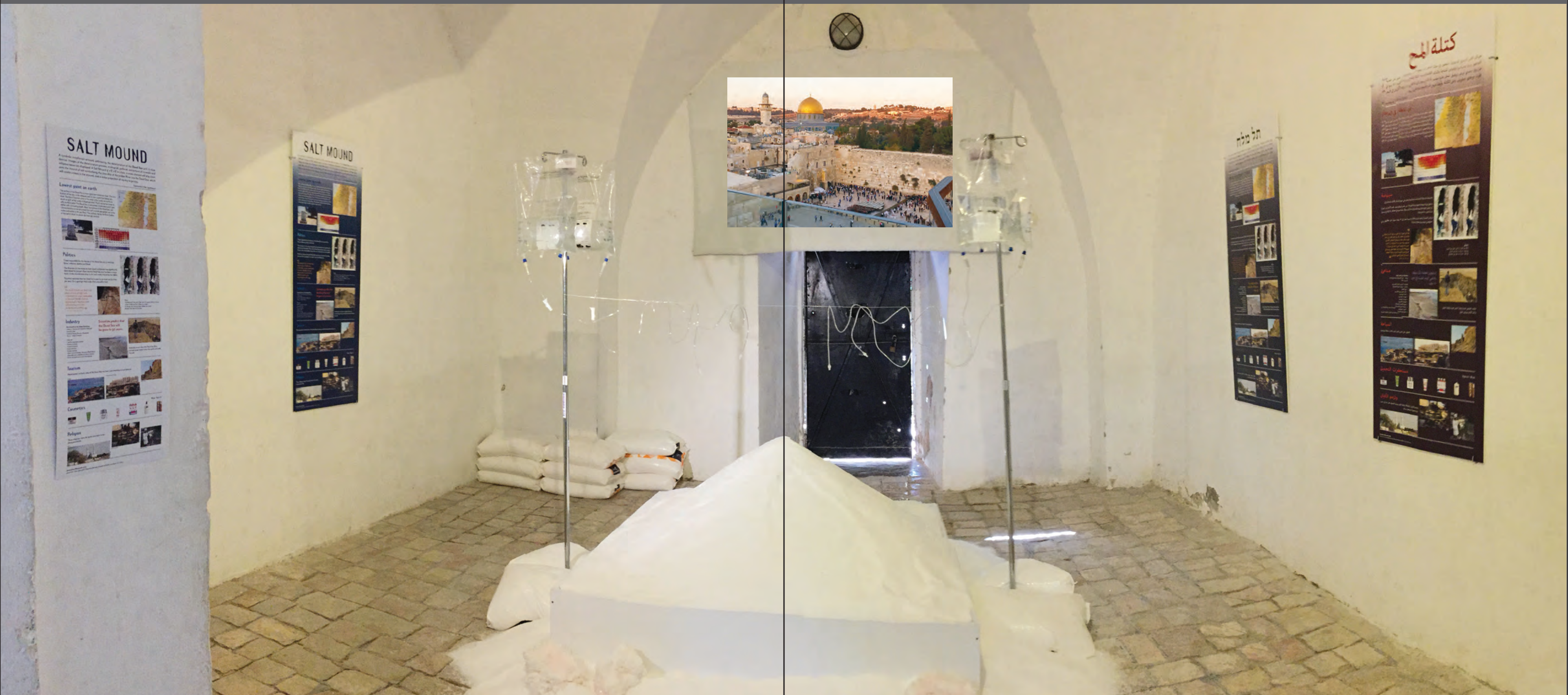
Photo: Tilia Manto

Cosmetics

\$6.99 – \$550.00



Images courtesy of AHAVA



Jerusalem Biennale 2017

Jerusalem: Questions Between Heaven and Earth
 Jewish Art Salon
 Curator: Ori Soltes

Installation of Salt Mound:

1 ton of sea salt in a 4' x 6' x 6' box
 2 infusion bags with water
 2 stands from Yad Sarah
 3 posters – English, Hebrew and Arabic
 Video from Jerusalem to Jericho by Bruria Finkel
 Music by Avila Eyton Santo

Special Thanks to

Sarah Jane Lind
Beverly Barkat
Abby Sher
Louise and Davis Riemer
Astrid Preston
Marlene Matlow (in memory of Channa Horwitz)
Helen Albright
Barbara Tenser
Judy and Marvin Zeidler
Sonya and Bruce Sultan
Isabele Devuvier
Dr. Eyal Botzer
Zeev Botzer
Or Shmulevitz
Alon Shimshon
Sharon Botzer

Very Special Thanks to

מלח הארץ

for the donation of 2 tons of salt and delivery to
The Underground Museum.

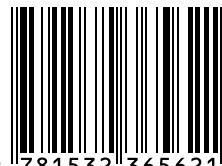




\$10.00

ISBN 978-1-5323-6562-1

5 1000 >



9 781532 365621